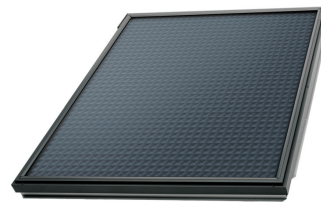


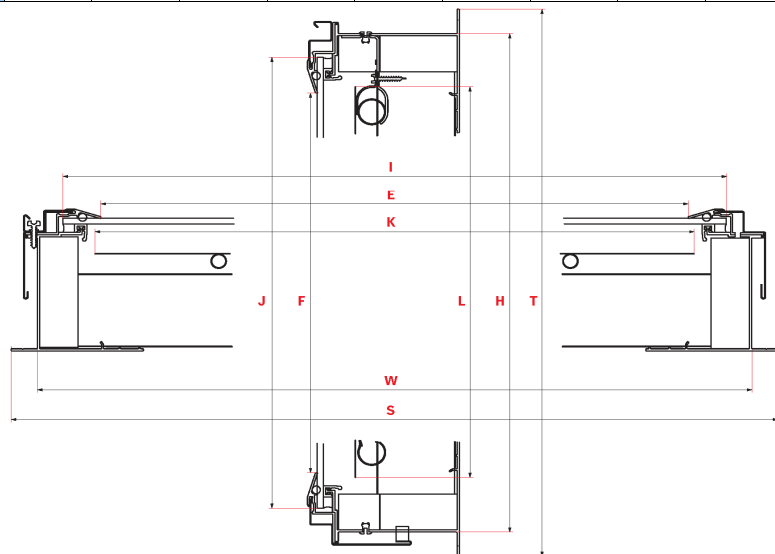
VELUX solar collector

CLI 4000



VELUX solar collector dimensions

Measurement (inches)	Width				Height				Depth
		U12	S06	M08		U12	S06	M08	All
Gross	S	54.1	46.2	32.0	T	72.0	47.5	56.2	3.9
Frame	W	52.8	44.9	30.7	H	70.7	46.2	54.8	
Glass	I	51.5	43.6	29.4	J	69.4	44.9	53.5	
Aperture	E	49.5	41.6	27.4	F	67.4	42.9	51.6	
Absorber	K	49.8	41.9	27.8	L	67.7	43.2	51.9	
Packaging	-	56.1	48.2	34.0	-	73.2	48.7	57.4	4.1



VELUX solar collector technical specifications

		U12	S06	M08
Weight (lbs.)	Collector weight	130	73	57
	Weight w/fluid	141	79	64
Collector Area (sq. ft.)	Gross area	27.1	15.2	12.5
	Aperture area	23.1	12.4	9.8
	Absorber area	23.4	12.6	10.0
Fluid volume (gal.)		0.58	0.34	0.24
Max operating pressure (psi)		87	87	87
Test pressure (psi)		145	145	145
Stagnation temperature (°F)		374	374	365
Thermal performance rating - warm climate (1000s btu/day)	Clear day	29	15	12
	Mildly cloudy day	20	11	8
	Cloudy day	11	6	5
Thermal performance rating - cool climate (1000s btu/day)	Clear day	19	10	8
	Mildly cloudy day	11	6	4
	Cloudy day	4	2	1
Efficiency	η_{a0} (start efficiency)	0.6960	0.6610	0.6390
	a_1 (Btu/hr·ft ² ·°F)	0.4747	0.4666	0.4603
	a_2 (Btu/hr·ft ² ·°F ²)	0.0020	0.0019	0.0018